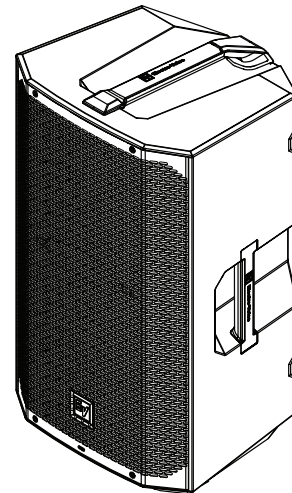


## EVERSE12 12" 2-way battery powered speaker

- Long run-time rechargeable, removable and replaceable Li-ion battery pack with 6+ hours of constant music playback at maximum output levels, or 12+ hours at 100 dB SPL average.
- Real professional level output and Electro-Voice sound quality, thanks to a 12-inch woofer with SST port and a 1-inch titanium compression driver.
- Easy to use with QuickSmart Mobile app and Electro-Voice's Intuitive User Interface.
- High Quality Stereo Bluetooth® streaming with true wireless stereo (TWS) linking between two EVERSE speakers.
- **POWERED BY DYNACORD** with built-in digital 4-channel mixer.



The EVERSE 12 is a versatile, easy to use, compact, battery-powered loudspeaker system. It provides professional level performance and is housed in a robust weatherized enclosure. The EVERSE 12 provides real professional performance for musical performances, voice reinforcement and audio playback. The EVERSE 12 takes advantage of decades of Electro-Voice and Dynacord pro-audio and electronics expertise, along with new advancements in technology, to provide truly portable and truly wireless audio.

The EVERSE 12 utilizes a 2-way configuration with a 12-inch woofer and a high efficiency titanium compression driver mounted on Electro-Voice's patented SST baffle. It produces 5 dB higher SPL with 100° x 60° coverage and deeper bass than the EVERSE 8.

The rugged polypropylene enclosure features a weatherized input cover for the input section, allowing the loudspeaker to meet IP43 rating (splash and light rain resistant) for use on battery power and Bluetooth® streaming. The available accessory rain cover allows for additional weather resistance and protection when needed.

The EVERSE 12 features Electro-Voice's QuickSmart DSP and is **POWERED BY DYNACORD**, featuring a built-in 4-channel digital mixer with FX, feedback suppression, and ducking features. The loudspeaker

features a custom designed, and fully optimized for audio use, high capacity battery pack. The battery pack provides more than enough power to complete the show, including a 12 V DC accessory port to power RE3 or R300 wireless microphone systems. The EVERSE 12 is available only in black.

### Technical specifications

Frequency response (-3 dB) (Hz) (-3 dB) <sup>1</sup>	55 Hz – 20,000 Hz
Frequency range (-10 dB) (Hz) <sup>2</sup>	45 Hz – 20,000 Hz
Maximum sound pressure level at a distance of 1 m (dB) <sup>3</sup>	126 dB
Coverage angle HxV (°)	100° x 60°
Amplifier rating (W)	400 W
LF transducer size (in)	12 in
LF transducer magnet material	Ferrite
HF transducer size (in)	1 in
HF transducer type	Compression driver
HF transducer diaphragm material	Titanium
HF transducer magnet material	Ferrite
Crossover frequency (kHz)	2 kHz

Connector type	3.5 mm stereo jack; XLR/TRS combo jack (2); charge port; TRS footswitch; 12 V DC power output
Enclosure	Polypropylene
Grille material	Powder coated steel
USB charging	1.5 A max., device-dependent
Color	Black
Dimensions (H x W x D) (mm)	597 mm x 345 mm x 347 mm
Dimensions (H x W x D) (in)	23.50 in x 13.58 in x 13.66 in
Weight (kg)	14.16 kg
Weight (lb)	31.22 lb
Shipping weight (kg)	16.34 kg
Shipping weight (lb)	36.02 lb
Power consumption (V, Hz, A) <sup>4</sup>	100 - 240 V~, 50 - 60 Hz, 1.2 - 0.6 A
Battery capacity (Wh)	86.4 Wh
Battery run time (at max. output) <sup>5,7</sup>	6+ hours
Battery run time (at 100 dB SPL) <sup>2,6,7</sup>	12+ hours

1) Full space measurement using music DSP preset.

2) Half-space measurement.

3) Maximum SPL is measured at 1 m using broadband pink noise at maximum output.

4) Current rating is 1/8 power.

5) Maximum output before loudspeaker limit indication, with typical program material.

6) Moderate output with typical program material.

7) Powering external devices via the DC power jack, USB connection, and/or phantom power will reduce battery run time.

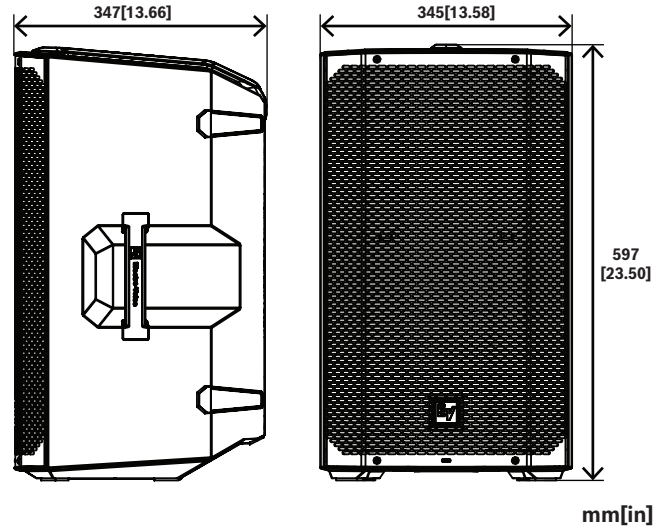


Fig. 1: Dimensions

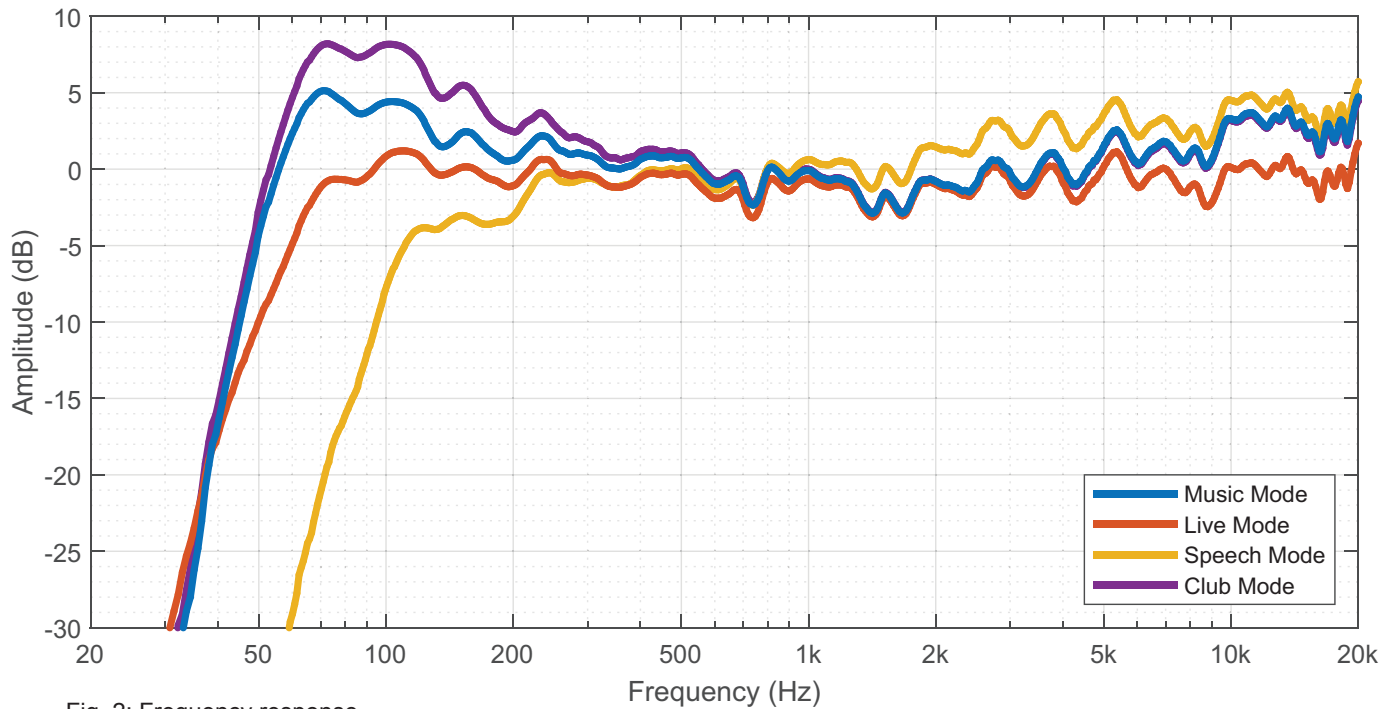
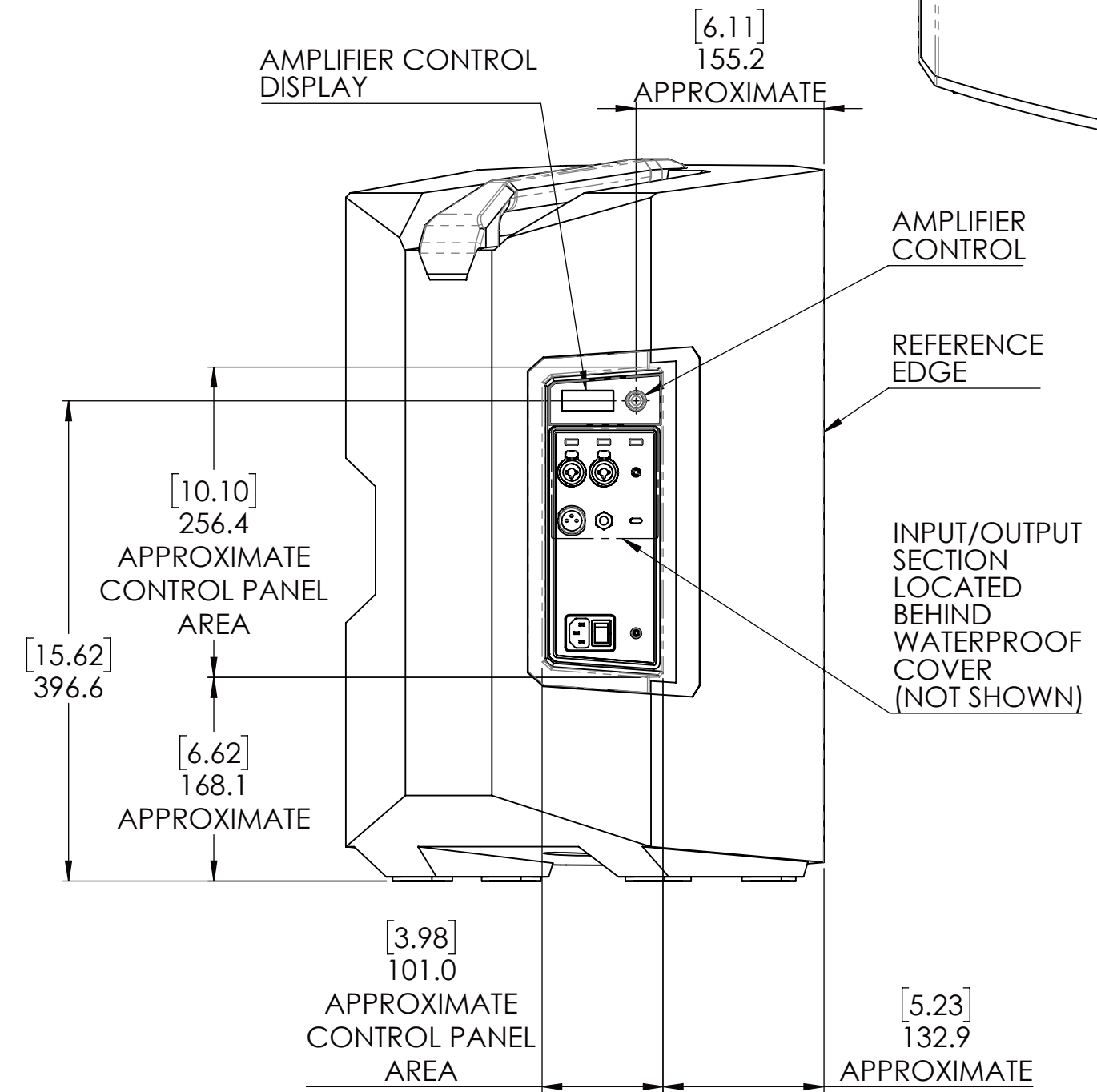
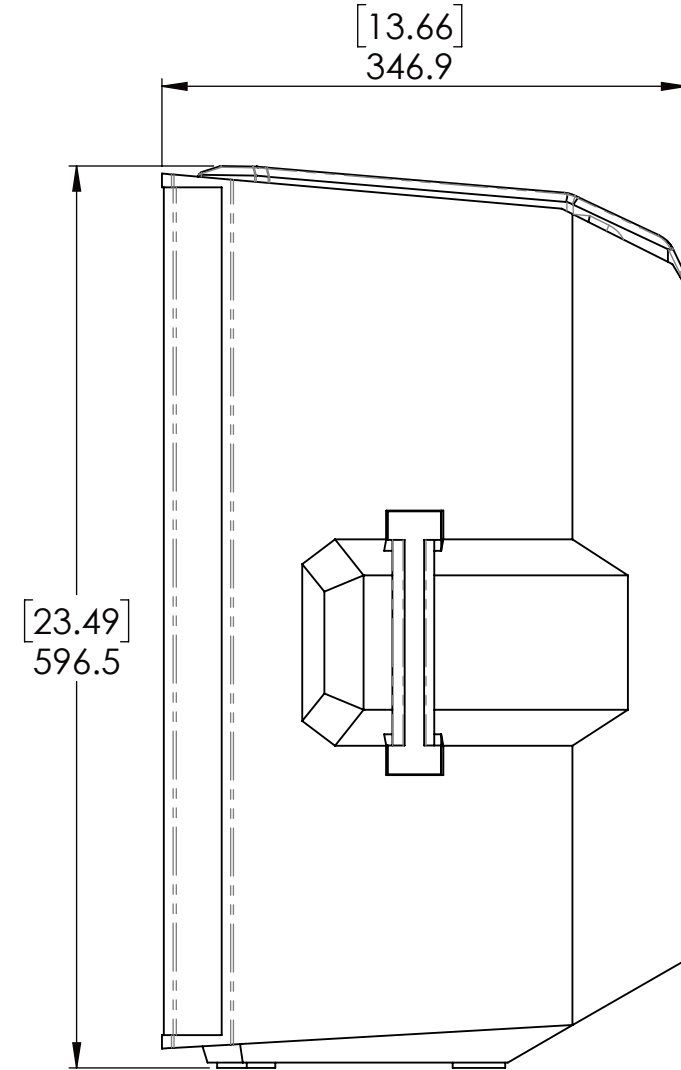
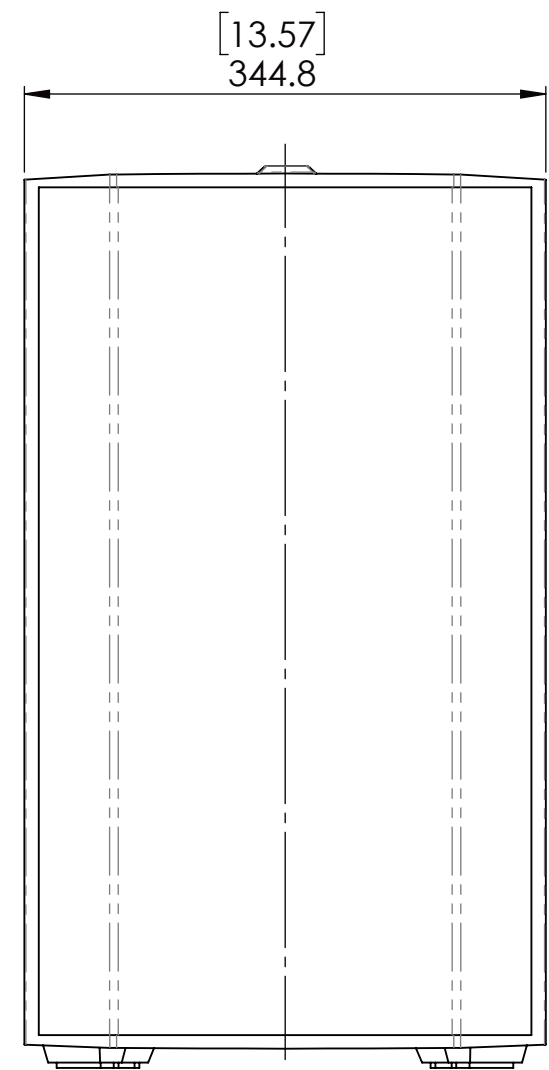
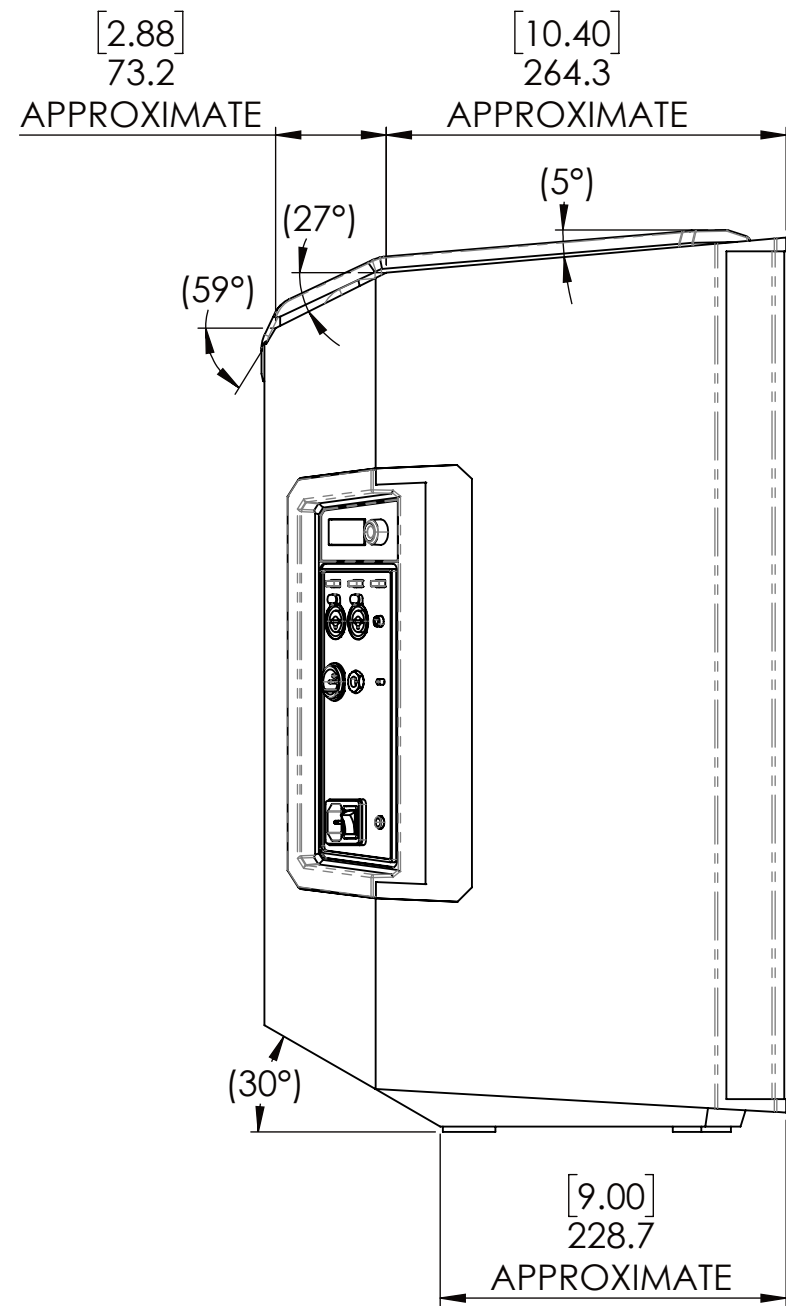
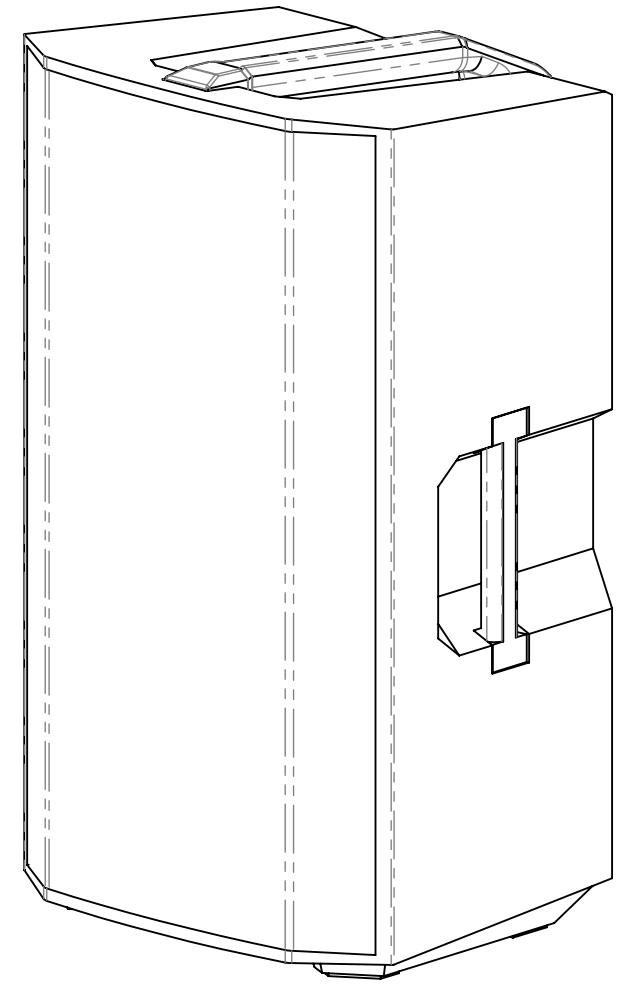
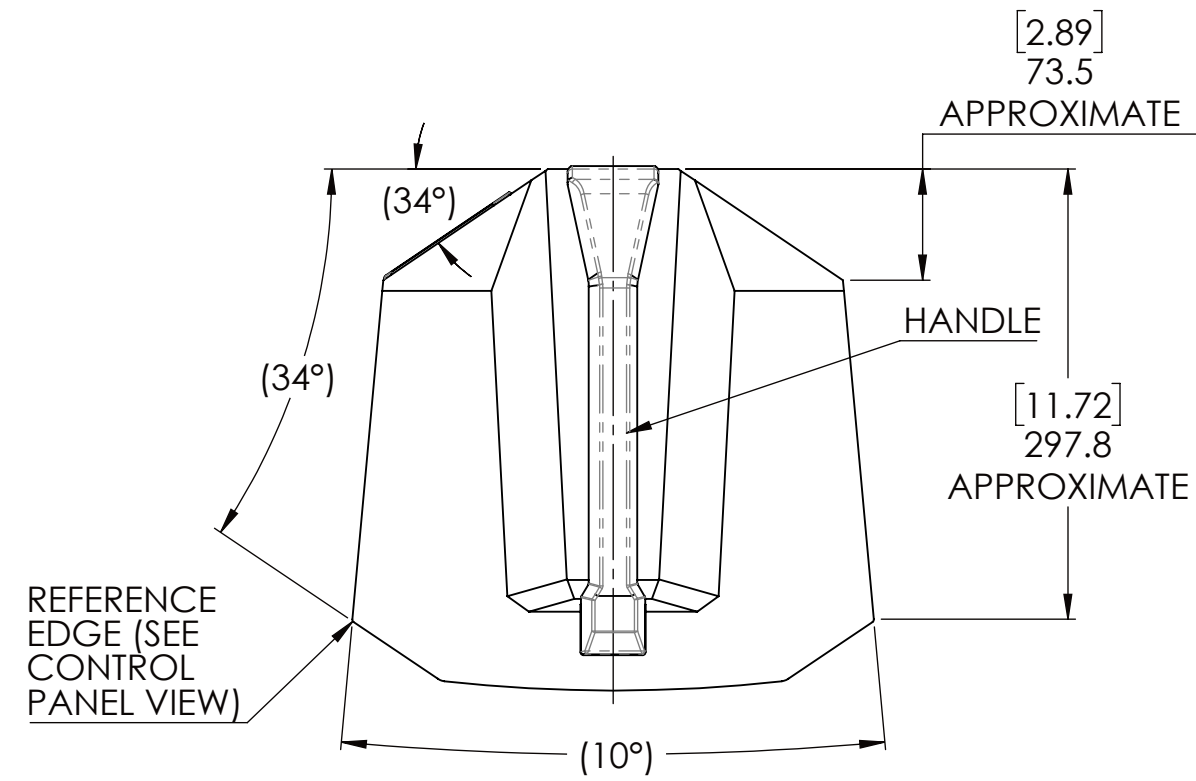
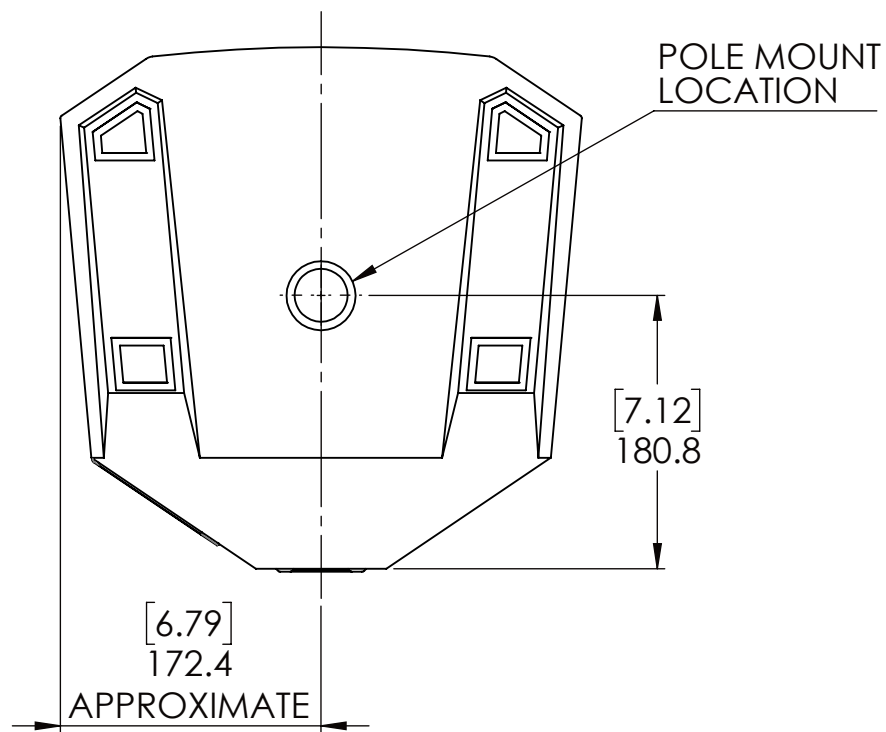


Fig. 2: Frequency response



CONTROL PANEL VIEW



EVERSE12	12" 2-WAY SPEAKER BATTERY BLACK US
EVERSE12	12" 2-WAY SPEAKER BATTERY BLACK EU

01	----	20230620	bak2zhu	fis1buv	nie1buv	368	BT-CO/ENG3	RELEASED
00	----	20230616	bak2zhu	fis1buv	nie1buv	368	BT-CO/ENG3	DRAWN
Ind.	Change	YYYYMMDD	Drawn	Checked	Release	BWN	Resp. dept.	Add info.
Treatment							Missed Details	Size
Material							From	EVERSE12
Lang.	en	Weight						Sheet 1 / 1
Crit. P.		Scale	1:5					Format A2
MNR		Mat. meets	N2580-1	Syst.	SW	Repl. for		Repl. by
Doc. Type							DRW	2 MODELS CHARTED
DP/TD								Vers. 01

© Robert Bosch LLC (2008). All rights reserved. No part of this publication may be reproduced, stored in a retrieval system, or transmitted, in any form or by any means, electronic, mechanical, photocopying, recording, or by any information storage and retrieval system, without the prior written permission of Robert Bosch LLC.